

DUCTLESS HEATING AND COOLING SYSTEMS

WALL-MOUNTED HEAT PUMPS

Slim, wall-mounted indoor units provide zone comfort control. INVERTER-driven compressors and electronic LEVs provide higher efficiency with controlled power usage. The indoor unit is powered by the outdoor unit and should a power outage occur, the system is automatically restored when power returns.



PH SERIES HIGH EFFICIENCY HEAT PUMPS

- ▶ Available capacities in kBtu/h: 06, 09, 12, 15, 18
- ▶ 100% heating at 5° F (as compared to AHRI Rated High Heat Capacity)
- ▶ Industry-leading efficiency of 33.1 SEER (NTXWPH06A112A)
- ▶ Pro-Heat performance down to -13° F outdoor ambient
- ▶ Double-vane air delivery for enhanced circulation
- ▶ 3D i-see Sensor™
- ▶ Infrared human sensing technologies to measure location of human heat signatures
- ▶ Multi-function wireless controller
- ▶ Compatible with kumo cloud® control app and Thermostat Interface



ST SERIES NTXSST HEAT PUMPS

- ▶ Available capacities in kBtu/h: 09, 12, 15, 18, 24, 30, 36
- ▶ 14.5 to 24.6 SEER, 8.2 to 12.8 HSPF, INVERTER-driven compressor
- ▶ Auto restart and auto cooling/heating changeover
- ▶ Nano air filtration technology equipped
- ▶ Vertical air swing on all units
- ▶ Compatible with kumo cloud® control app and Thermostat Interface
- ▶ All NTXSST Systems from 09 to 24 are ENERGY STAR® certified



ML SERIES NTXWMT/NTXWMT PRO LINE HEAT PUMPS

- ▶ Available capacities in kBtu/h: 09, 12, 15, 18, 24
- ▶ Efficiency: 18 SEER/9.5–10.0 HSPF
- ▶ Four fan speeds
- ▶ Inverter driven compressor
- ▶ Heating operation range: -4° F to 75° F
- ▶ Cooling operation range: 14° F to 115° F
- ▶ Compatible with kumo cloud® control app and Thermostat Interface
- ▶ Optional anti allergen filter accessory MAC-408FT-E available

SINGLE-ZONE SYSTEMS

DUCTLESS HEATING AND COOLING SYSTEMS



EL SERIES NTXWEL/NTXSEL HEAT PUMP

- ▶ Available capacities in kBtu/h: 09, 12, 18, 24
- ▶ Efficiency: SEER 16.0 / EER 9.0 / HSPF 8.5
- ▶ Four fan speeds
- ▶ INVERTER-driven heat pump
- ▶ Heating operation range: 5° F to 75° F
- ▶ Cooling: 32° F to 115° F
- ▶ Compatible with kumo cloud® control app and Thermostat Interface



ML SERIES NTXWMT/NTXWMT 115V HEAT PUMP

- ▶ Available capacities in kBtu/h: 09, 12
- ▶ Efficiency: SEER 17.0 / EER 9.9 to 12.0 / HSPF 8.5
- ▶ Four fan speeds
- ▶ INVERTER-driven heat pump
- ▶ Heating operation range: -4° F to 75° F
- ▶ Cooling operation range: 14° F to 115° F
- ▶ Compatible with kumo cloud® control app and Thermostat Interface

SINGLE-ZONE SYSTEMS

DUCTLESS HEATING AND COOLING SYSTEMS

FLOOR-MOUNTED INDOOR UNITS

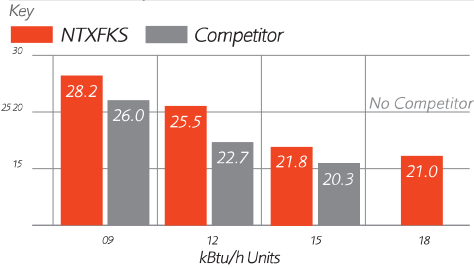
These indoor units mount on the wall close to the floor and have front panel access to the filter for ease of cleaning. They are perfect for difficult areas that may be smaller or don't have usable space on the walls.



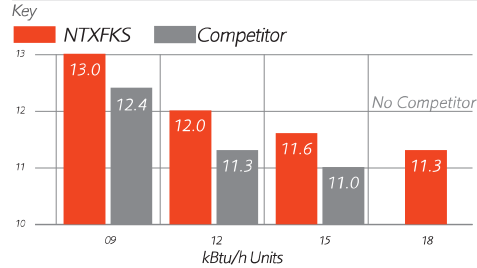
KONNECT SERIES NTXFKS / NTXSPF HEAT PUMPS

- ▶ Available capacities in kBtu/h: 09, 12, 15, 18
- ▶ 21.0 to 28.2 SEER
- ▶ Rapid heating
- ▶ Operates with 25% less power than competing models
- ▶ Recessing is an option
- ▶ Pro-Heat technology
- ▶ Meets ENERGY STAR® efficiency levels

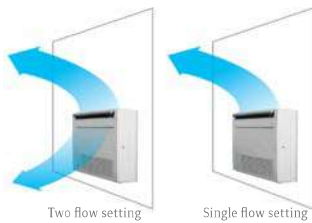
SEER (vs Competitor)



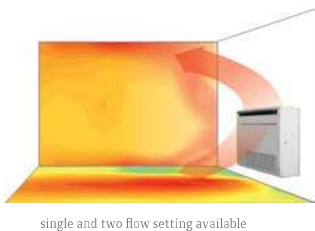
HSPF (vs Competitor)



Cooling Airflow Patterns



Heating Airflow Pattern



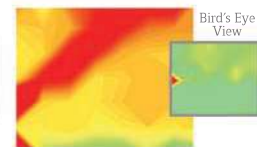
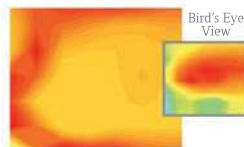
NTXFKS15A112A

Competitor

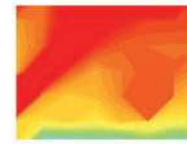
10 minutes on



30 minutes on



60 minutes on



Warm air covers the entirety of the room.

The ground level is left cold.

SINGLE-ZONE SYSTEMS

DUCTLESS HEATING AND COOLING SYSTEMS

CEILING CASSETTE HEAT PUMPS

NTXCKS 2'x2' ceiling-recessed cassette units offer a wide airflow pattern for better air distribution in a less obtrusive style. Install NTXCKS in a hard ceiling (with an access panel for servicing) or in 2'x2' drop ceiling.



KONNECT SERIES NTXCKS/NTXSKS HEAT PUMP SYSTEMS

- ▶ Available capacities in kBtu/h: 09, 12, 15, 18
- ▶ 19.8 to 22.4 SEER, 11.2 to 12.2 HSPF, INVERTER-driven compressor
- ▶ Provides cooling and heating in a wide range of capacities
- ▶ Ventilation air knockouts
- ▶ Built-in condensate lift mechanism (up to 33")
- ▶ Multiple airflow adjustments
- ▶ 3D i-See Sensor™
- ▶ Individual vane control



KONNECT SERIES NTXUKS/NTXSKS ONE-WAY CEILING CASSETTE HEAT PUMP SYSTEMS

The NTXUKS one-way ceiling cassette can easily be mounted between the joists, making this product ideal for retrofit or new construction projects.

- ▶ Available capacities in kBtu/h: 09, 12, 18
- ▶ 19.5 to 20.3 SEER, 11.9-13.0 HSPF, INVERTER-driven compressor
- ▶ Built-in condensate lift mechanism (19-11/16")
- ▶ 4 fan speeds plus auto fan mode
- ▶ Meets ENERGY STAR® efficiency requirements

HORIZONTAL-DUCTED HEAT PUMP AIR HANDLING UNITS

Konnect Series NTXDKS ducted units provide comfort and efficiency while staying hidden either in the ceiling or beneath the floor.



KONNECT SERIES NTXDKS/NTXSKS HEAT PUMP SYSTEMS

- ▶ Available capacities in kBtu/h: 09, 12, 15, 18
- ▶ 18.8 to 22 SEER, 10.8 to 12.6 HSPF, INVERTER-driven compressor
- ▶ Provides cooling and heating in a wide range of capacities
- ▶ Built-in condensate lift mechanism (up to 21-11/16")
- ▶ Static capability up to 0.20 in. wg
- ▶ Optional filter box with MERV-8 filters



KONNECT SERIES PEAD/NTXSKS HEAT PUMP SYSTEMS

- ▶ Available capacities in kBtu/h: 09, 12, 15, 18, 24, 30, 36
- ▶ 18.6 to 19.4 SEER, 10.9 to 12.1 HSPF, INVERTER-driven compressor
- ▶ Built-in condensate lift mechanism (up to 27-9/16")
- ▶ Static capability up to 0.60 in. wg
- ▶ Optional filter box with MERV-13 filters
- ▶ Interlock with Lossnay®
- ▶ 2-stages of supplemental heat control

SINGLE-ZONE SYSTEMS

HEATING AND COOLING

NTXAMT DUCTED AIR HANDLER

This air handler is ideal for both system replacement and efficient cooling and heating in ducted applications.

- ▶ Available capacities in kBtu/h: 12, 18, 24, 30, 36
- ▶ Up to 18 SEER
- ▶ Upflow, horizontal left, horizontal right configurations
- ▶ Optional downflow kit
- ▶ Optional electric heat kits
- ▶ Condensation overflow switch connection
- ▶ Humidifier and ERV interface connections
- ▶ Auxiliary heat control connections



Optional auxiliary heat kit can be mounted on top of the air handler, simplifying field installation



Black ZAM material is highly corrosion-resistant coated steel (zinc, aluminum and magnesium)



1 inch R4.2 fiberglass-free insulation is not compressed and there is no screw penetration through the insulation, resulting in minimal condensation on the exterior



Cabinet air leakage is less than 2.0% at 1.0 in. w.g. (tested in accordance with ASHRAE Standard 193)



Blow-through design results in a positive pressure cabinet and allows simple coil cleaning when the blower is removed



Forward curved blower ensures quiet operation



Selectable external static pressure: 0.30, 0.50 and 0.80 in w.g., with three fan speeds at each static setting



Highly efficient, totally enclosed electronically commutated motor positioned to prevent sound from traveling through the ductwork



Washable, standard-sized filter

MULTI-ZONE SYSTEMS

MX SERIES NTXMMX/MX PH SERIES NTXMPH OUTDOOR UNITS

With the NTXMMX/NTXMPH multi-zone standard and Pro-Heat systems, you can enjoy ideal levels of comfort in the rooms you use most while reducing energy costs. Each zone operates independently. People in different rooms — like the kitchen, master bedroom or living room — can set temperatures for personalized comfort.

THE MULTI-ZONE SYSTEMS INCLUDE

- ▶ Mix and match flexibility of indoor unit styles and combinations
- ▶ A wide range of indoor unit capacities that match the room size and requirements
- ▶ Flexible options to tackle the most challenging multi-room installations
- ▶ High-efficiency, multiple ENERGY STAR® combinations
- ▶ Four- and five-ton outdoor unit can support up to eight indoor units using branch boxes
- ▶ New five-ton outdoor unit for large residential home applications
- ▶ Auto restart following a power outage
- ▶ Self-check function offering integrated diagnostics



NTXMMX/NTXMPH AND INDOOR UNIT COMPATIBILITY CHART

MULTI-ZONE OUTDOOR UNIT	BRANCH BOX	NTXAMT	NTXWST	NTXFKS	MSZ-EF	NTXWPH	NTXDKS	NTXUKS	NTXCKS	PCA	PLA	PEAD*
		12, 18, 24, 30, 36	6, 9, 12, 15, 18, 24	9, 12, 15, 18	9, 12, 15, 18	6, 9, 12, 15, 18	9, 12, 15, 18	9, 12, 18	9, 12, 15, 18	24, 30, 36, 42	12, 18, 24, 30, 36, 42	9, 12, 15, 18, 24, 30, 36, 42
PRO-HEAT EQUIPMENT	NTXMPH20A122A	12 ✓	6, 9, 12, 15 ✓	9, 12, 15 ✓	9, 12, 15 ✓	6, 9, 12, 15 ✓	9, 12, 15 ✓	9, 12 ✓	9, 12 ✓			9, 12, 15 ✓
	NTXMPH24A132A	12, 18 ✓	6, 9, 12, 15, 18 ✓	✓	✓	✓	✓	✓	9, 12, 15 ✓		18 ✓	9, 12, 15, 18 ✓
	NTXMPH30A132A	12, 18, 24 ✓	✓	✓	✓	✓	✓	✓	9, 12, 15 ✓	24 ✓	18 ✓	9, 12, 15, 18, 24 ✓
	NTXMPH36A142A	✓	12, 18, 24 ✓	✓	✓	✓	✓	✓	9, 12, 15 ✓		12, 18, 24, 30, 36 ✓	9, 15, 12, 18, 24, 30, 36 ✓
	NTXMPH42A152A	✓	12, 18, 24 ✓	✓	✓	✓	✓	✓	9, 12, 15 ✓		12, 18, 24, 30, 36 ✓	9, 15, 12, 18, 24, 30, 36 ✓
	NTXMMX48A182A	✓	✓	✓	✓	✓	✓	✓	9, 12, 15 ✓		12, 18, 24, 30, 36 ✓	9, 15, 12, 18, 24, 30, 36 ✓
STANDARD EQUIPMENT	NTXMMX20A122A	12 ✓	6, 9, 12, 15 ✓	9, 12, 15 ✓	9, 12, 15 ✓	6, 9, 12, 15 ✓	9, 12, 15 ✓	9, 12 ✓	9, 12 ✓			9, 12, 15 ✓
	NTXMMX24A132A	12, 15 ✓	6, 9, 12, 15, 18 ✓	✓	✓	✓	✓	✓	9, 12, 15 ✓		18 ✓	9, 12, 15, 18 ✓
	NTXMMX30A132A	12, 18, 24 ✓	✓	✓	✓	✓	✓	✓	9, 12, 15 ✓	24 ✓	18 ✓	9, 12, 15, 18, 24 ✓
	NTXMMX36A142A	✓	✓	✓	✓	✓	✓	✓	9, 12, 15 ✓	24 ✓	18 ✓	9, 12, 15, 18, 24 ✓
	NTXMMX42A152A	✓	✓	✓	✓	✓	✓	✓	9, 12, 15 ✓	24 ✓	18 ✓	9, 12, 15, 18, 24 ✓
	NTXMMX48A182A	✓	✓	✓	✓	✓	✓	✓	9, 12, 15 ✓		12, 18, 24, 30, 36 ✓	9, 15, 12, 18, 24, 30, 36 ✓
	NTXMMX60A182A	✓	✓	✓	✓	✓	✓	✓	9, 12, 15 ✓		12, 18, 24, 30, 36 ✓	9, 15, 12, 18, 24, 30, 36 ✓

✓ COMPATIBLE

*Please refer to the installation manual, Diamond System Builder, and full compatibility chart for restrictions on the maximum number of indoor units that can be connected for ducted air handlers.

Information is current as of this printing. Minimum installed capacity cannot be less than 12,000 Btu/h.

**A minimum of two indoor units must be connected to all NTXMMX/NTXMPH outdoor units.
Minimum installed capacity cannot be less than 12,000 Btu/h.**

MULTI-ZONE SYSTEMS

INDOOR UNITS FOR MULTI-ZONE SYSTEMS (NTXMMX/NTXMPH COMPATIBLE)

ST SERIES NTXWST WALL UNITS

Our standard wall-mounted units, the NTXWS series offers a slim profile and provides enhanced, industry-leading performance for the multi-zone product category. With washable long-life filters, features such as auto-restart and compatibility with the kumo cloud® app, you'll experience comfort as you never have before.

- ▶ Available capacities in kBtu/h: 6, 9, 12, 15, 18, 24
- ▶ Whisper-quiet operation
- ▶ Also available for single-zone application



PH SERIES NTXWPH HIGH-EFFICIENCY WALL UNITS

Let the NTXWPH line of wall-mounted units create personalized home comfort at its absolute best. The NTXWPH features industry-leading efficiency and triple-action filtration for a healthier home. The 3D i-see Sensor™ uses infrared technology to sense your heat signature, directing cool and warm air where it's needed most, and helping to save you even more on your energy bills. Control all of these great features with the kumo cloud® app for the ultimate in home comfort.

- ▶ Available capacities in kBtu/h: 6, 9, 12, 15, 18
- ▶ Double-vane air delivery for enhanced circulation
- ▶ Optional Thermostat Interface (PAC-US444CN-1) to allow for operation with third-party thermostats
- ▶ Whisper-quiet operation



MULTI-ZONE SYSTEMS

INDOOR UNITS FOR MULTI-ZONE SYSTEMS (NTXMMX/NTXMPH COMPATIBLE)

MSZ-EF DESIGNER WALL UNITS

The MSZ-EF Designer Series wall-mounted units combine the ultimate in aesthetic standards with the most innovative cooling and heating technology. Available in four capacities, they are perfect for almost any size room. The three available model colors and sleek design allow seamless integration into interior architecture and décor. Their whisper-quiet operation enables the units to be used in noise-sensitive residential properties and work spaces as well. And, last but not least, the environment can breathe a sigh of relief: these Designer Series wall-mounted units, as part of a Zoned Comfort Solution[®], are extremely energy efficient.



- ▶ Available capacities in kBtu/h: 9, 12, 15, 18
- ▶ Three colors to choose from: glossy white, matte silver and glossy black

KONNECT SERIES NTXFKS FLOOR UNITS

The NTXFKS floor unit features a contemporary slimline design and dramatically reduced depth while introducing a significant innovation in multi-flow vane technology that contributes to a faster heating process. This technology efficiently recirculates air to quickly raise room temperature during the cooler months of the year. NTXFKS floor units are the perfect solution for unobtrusive heating or cooling at floor level. New advanced technology offers heating performance during low temperatures in the shortest amount of time (and with more even heat distribution), all while maintaining maximum energy efficiency.



- ▶ Hot-start technology
- ▶ Whisper-quiet operation

- ▶ Available capacities in kBtu/h: 9, 12, 15, 18

MULTI-ZONE SYSTEMS

INDOOR UNITS FOR MULTI-ZONE SYSTEMS (NTXMMX/NTXMPH COMPATIBLE)

KONNECT SERIES NTXAMT DUCTED AIR HANDLER

This air handler is ideal for both system replacement and efficient cooling and heating in ducted applications.

- ▶ Available capacities in kBtu/h: 12, 18, 24, 30, 36
- ▶ Upflow, horizontal left, horizontal right configurations
- ▶ Optional electric heat kits
- ▶ Condensation overflow switch connection
- ▶ Humidifier and ERV interface connections
- ▶ Auxiliary heat control connections



KONNECT SERIES NTXDKS HORIZONTAL-DUCTED HEAT PUMPS

NTXDKS ducted units provide comfort and efficiency while staying hidden either in the ceiling or beneath the floor and work well with existing ductwork

- ▶ Available capacities in kBtu/h: 9, 12, 15, 18
- ▶ Built-in condensate lift mechanism (up to 21-11/16")



PEAD HORIZONTAL-DUCTED HEAT PUMPS

- ▶ Available capacities in kBtu/h: 9, 12, 15, 18, 20, 24, 30, 36
- ▶ INVERTER-driven compressor
- ▶ Built-in condensate lift mechanism (up to 27-9/16")
- ▶ Static capability up to 0.60 in. wg
- ▶ Option filter box with MERV-13 filters
- ▶ Interlock with Lossnay®
- ▶ 2-stages of supplemental heat control with PAC-YU25HT accessory



Select PLA and PCA models are also compatible with select multi-zone NTXMMX/NTXMPH systems.
For full NTXMMX/NTXMPH combinations list, visit www.Trane.com/Residential

MULTI-ZONE SYSTEMS

INDOOR UNITS FOR MULTI-ZONE SYSTEMS (NTXMMX/NTXMPH COMPATIBLE)

KONNECT SERIES NTXCKS MODEL FOUR-WAY CEILING CASSETTE

New NTXCKS ceiling-recessed cassette new design easy to install enables fitting into narrow ceiling space.

- ▶ Available capacities in kBtu/h: 9, 12, 15, 18
- ▶ Energy savings Performance
- ▶ Easy installation
- ▶ Quietness
- ▶ New Design



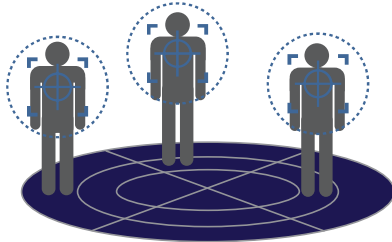
Temporary Hanging Hook

The structure of the panel has been revised and is now equipped with a temporary Hanging Hook. This has improved work efficiency during temporary panel installation



MULTI-ZONE SYSTEMS

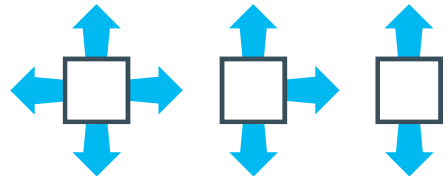
3D i-see Sensor™



- 3D i-see Sensor™ detects the number of people in the room and sets temperature accordingly
- Automatic power-saving operation
- Enhanced power-saving mode

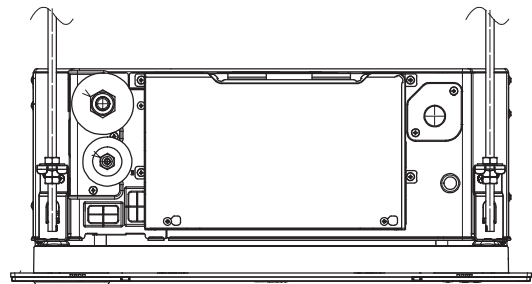
Four-way Vane Control

- Two-way, three-way and four-way airflow pattern selection
- Direct/Indirect airflow
- Seasonal airflow mode



Quietness

The sound level has been reduced by 2-4dB thanks to the introduction of a 3D turbo fan, for quieter and more comfortable air conditioning temporary panel installation



- Lowest profile 9-5/8" height above ceiling
- Panel size reduced:
W x D: 25 -9/16"(650mm) x 25 9/16"(650mm)
W x D: 24-5/8" (625mm) x 24-5/8" (625mm)

MULTI-ZONE SYSTEMS

INDOOR UNITS FOR MULTI-ZONE SYSTEMS (NTXMMX/NTXMPH COMPATIBLE)

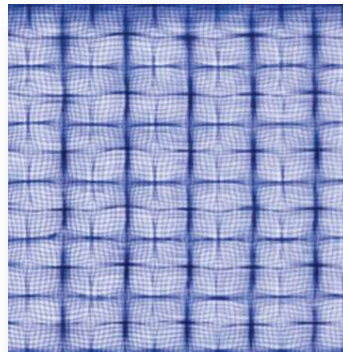
KONNECT SERIES NTXUKS ONE-WAY CEILING CASSETTE HEAT PUMPS

The NTXUKS one-way ceiling cassette can easily be mounted between the joists, making this product ideal for retrofit or new construction projects.

- ▶ Built-in condensate lift mechanism (19-11/16")
- ▶ Available capacities in kBtu/h: 09, 12, 18
- ▶ Flexible air flow direction: left/right and up/down
- ▶ 4 fan speeds plus auto fan mode



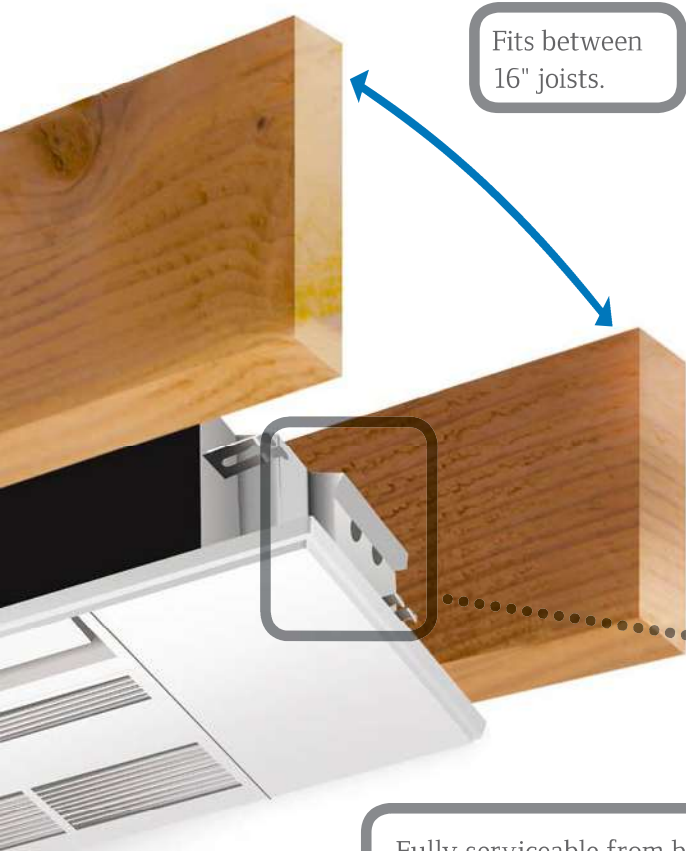
Interior pocket to hold
Wireless Interface for
kumo cloud® app.



Washable antibacterial and
deodorizing filter. 3D surface
provides better dust collection.

Optional silver-iodized air purifier
filter available (MAC-408FT-E).
This filter captures and neutralizes
bacteria, pollen and other airborne
allergens.

MULTI-ZONE SYSTEMS



Fits between 16" joists.



The NTXUKS comes with flexible drain joints, and insulation material pretreatment eliminates the need for wrapping.



CONNECTED CONTROLLERS

MANAGE YOUR COMFORT FROM ANYWHERE WITH kumo cloud®



PAC-USWHS002-WF-1

Apple and the App Store are registered trademarks of Apple, Inc.
Amazon, Alexa, Fire and all related logos are trademarks of Amazon.com, Inc. or its affiliates.
Google play is a registered trademark of Google, Inc.

Did you forget to turn off your unit before leaving for vacation? You don't have a worry in the world when you have the kumo cloud app. Temperatures may be changed, schedules may be set, stored, and changed, as well as much more from anywhere internet connectivity is available. It really is comfort made personal.

Anytime, Anywhere Control

kumo cloud gives you the ability to effortlessly control your home's comfort. Whether you're out for the day or the month, looking to cool down or warm up, kumo cloud gives you control from any smart phone, tablet or web browser.

Program and Schedules

kumo cloud walks you through a five-step process to easily schedule the mode, set temperature and fan speed, for an individual zone or several zones at once.

Easily Zoned

Once your Wireless Interface is installed on your indoor unit by a trained HVAC professional, the indoor unit will discover the app. Name your indoor units, create groups, and organize multiple properties from one user-friendly app. A trained HVAC professional installs a Wireless Interface for each indoor unit.

Check Filter Status

You never have to manually check a filter again. kumo cloud can tell you the status of any filter in your system at any time.

SPECIFICATIONS AND REQUIREMENTS

- ▶ Now compatible with Nv-Series, P-Series and CITY MULTI® systems
- ▶ kumo cloud allows for an indoor unit to be controlled remotely or locally with the app and web service
- ▶ For product information go to kumocloud.com
- ▶ Ability to group units and organize groups into sites
- ▶ Batch command units
- ▶ Ability to program events and scheduling into the unit itself
- ▶ Available in Fahrenheit or Celsius
- ▶ Easy to connect the device to your router using the kumo cloud app
- ▶ Each indoor unit must be equipped with a Wireless Interface (PAC-USWHS002-WF-1) installed by a licensed contractor
- ▶ Secure boot to prevent unauthorized reprogramming of Wireless Interface
- ▶ Intuitive initial settings feature for Nv- & P-Series equipment

LOCAL WIRELESS CONTROLLERS

Trane®/Mitsubishi Electric offers a wide variety of options when it comes to controlling your comfort. Whatever your need, we have the solution to effortlessly adjust your Zoned Comfort Solutions®.

MHK1 WIRELESS REMOTE CONTROLLER KIT

With the MHK1 Wireless Remote Controller Kit, comfort control has never been easier. It installs anywhere with a simple wall-mounted design, and its large, back-lit screen makes it very easy to read. Operation modes include cool, drying, auto, heat, and fan. Optimal start eliminates the guesswork when setting a schedule. This function allows the remote controller to “learn” how long your Zoned Comfort Solution takes to reach the programmed temperature setting, so the temperature is reached at the time you set.

The basic MHK1 Wireless Remote Controller Kit includes a Wireless Wall-mounted Remote Controller



and a Wireless Receiver located with the indoor wall or ceiling-mounted unit. You may choose to enhance your control convenience and flexibility with an optional Portable Central Controller and Outside Air Sensor.

PORTABLE CENTRAL CONTROLLER

When paired with the MHK1 Wall-Mounted Controller, the Portable Central Controller (MCCH1) can monitor and control on/off mode and set your desired temperature. It also has scheduled override capability and displays outside air temperature and humidity when paired with the outside air sensor.



OUTSIDE AIR SENSOR

The Outside Air Sensor (MOS1) monitors outdoor air temperature and humidity and conveniently displays that information on the Portable Central Controller and the wall-mounted controller.



WIRELESS REMOTE CONTROLLER

- ▶ MODE: HEAT, COOL, AUTO, and DRY
- ▶ FAN: Adjusts fan speed
- ▶ STOP/START: A 24-hour ON/OFF timer
- ▶ VANE: Sets horizontal vane position
- ▶ TIME: Power off timer and clock adjustment
- ▶ Included with Nv-Series wall-mounted and floor-mounted systems
- ▶ Optional wall-mounted wireless, fully functional (MHK1) and wall-mounted wired controllers are available. (PAR-33MAA & PAC-YT53CRAU require a MAC-333IF-E interface for NTYWST/NTXWPH/NTXWST/NTXWMT/NTXWEL/NTXFKS/NTXUKS and MSZ-EF indoor units)



ADDITIONAL FEATURES AVAILABLE ON CERTAIN MODELS

- ▶ “Powerful Mode” function permits system to temporarily run at a lower/higher temperature with an increased fan speed, which quickly brings the room to the optimum comfort level
- ▶ Wide Vane setting provides a wider horizontal air distribution on select models with wider cabinets
- ▶ Features vary by indoor model

LOCAL WIRED CONTROLLERS

PAR-CT01MAU-SB TOUCH MA REMOTE CONTROLLER

- ▶ User-friendly, customizable full color touch panel display
- ▶ Ability to add a custom logo on the display
- ▶ Large icons with 180 color patterns
- ▶ Daily and weekly timers
- ▶ Password protected
- ▶ Requires MAC-333IF-E for use with Nv-Series products
- ▶ The MELRemo app and Bluetooth® Low Energy (BLE) technology supports communication with smartphones or tablets in multiple languages.



PAR-33MAA BACK-LIT MA REMOTE CONTROLLER

- ▶ Room Temperature: displays room temperature sensed either at the indoor unit (default) or at the remote controller
- ▶ Set temperature range limit: from the Back-lit MA Controller, the set temperature range can be reduced for cool and heat modes
- ▶ Dimensions: 4-3/4" (w) x 3/4" (d) x 4-3/4" (h) (120 x 19 x 120mm)
- ▶ Requires MAC-333IF-E to use with Nv-Series. (refer to compatibility table for details)
- ▶ Setting screen for i-see Sensor™ 3D, draft reduction mode



PAC-YT53CRAU SIMPLE MA CONTROLLER

- ▶ Controls group operation for up to 16 indoor units in a single group
- ▶ Set temperature range limit: simple MA-allowable set temperature range can be reduced for cool and heat modes
- ▶ Room temperature can be sensed either at the indoor unit (default) or at the Simple MA Controller
- ▶ Dimensions: 2-3/4" (w) x 9/16" (d) x 4-3/4" (h) (70 x 14.5 x 120 mm)
Requires MAC-333IF-E to use with Nv-Series

